

HARRIS COUNTY FELONY PRETRIAL DETENTION REPORT

Brought to you by the Texas Center for Justice and Equity and researchers at Harvard University

July 16, 2023 - July 22, 2023



Melissa Morris – 263rd District Court

Among current pretrial jail inmates assigned to Judge Morris:

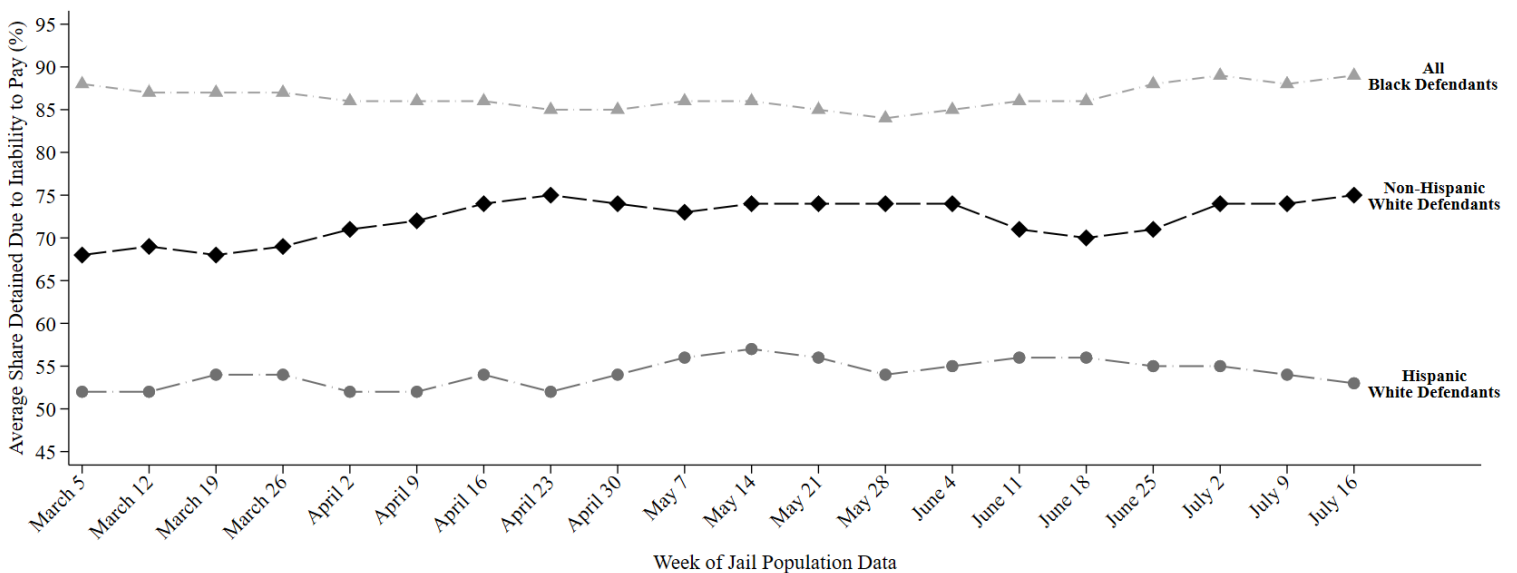
- **89% of Black defendants (114 out of 128)**
- **53% of Hispanic White defendants (29 out of 54)**
- **75% of Non-Hispanic White defendants (38 out of 50)**

were detained per night based on inability to pay

Last week, among current pretrial jail inmates assigned to Judge Morris, **89% of Black defendants (114 out of 128 on an average night)**, **53% of Hispanic White defendants (29 out of 54 on an average night)**, and **75% of Non-Hispanic White defendants (38 out of 50 on an average night)** were detained in Harris County Jail because they couldn't afford money bail.

Judge Morris's **racial difference in the share detained due to inability to pay for Black and Non-Hispanic White defendants** is among the **50% worst** in Harris County. Her **racial difference in the share detained due to inability to pay for Hispanic and Non-Hispanic White defendants** is among the **50% worst** in Harris County.

Track Judge Morris's Share Detained Due to Inability to Pay



This report uses jail population data provided by Harris County. Share detained due to inability to pay represents the percent of current pretrial jail inmates assigned to this judge who were detained because they couldn't afford money bail.